

DOMINION  
EVENTS



# PRIVATE HIRES BROCHURE

Host your event in the heart of the West End!

From rehearsals, auditions, meetings and read throughs our versatile spaces and dedicated events team will make sure your event is a showstopper

Hire one of the Dominion Theatre's versatile spaces to hold your next event within one of the West End's most prestigious venues.

With multiple studio and event rooms, our highly adaptable spaces are perfect for rehearsals, auditions, read-throughs, technical and production work, workshops, sharings and training sessions.

Conveniently located in central London - served by a wide range of public transport - the Dominion offers a range of purpose built, flexible and creative spaces in a truly unique setting at competitive rates.

For room availability and rates please contact a member of the Events Team on [dominionevents@nederland.co.uk](mailto:dominionevents@nederland.co.uk) or 020 7927 0945. We will be happy to answer your questions, talk through your requirements and arrange a site visit.



The Dominion has some great spaces for our varied needs and the central London location is excellent. The staff are always welcoming and helpful, making our time at the Dominion an enjoyable one.

**ROSS MORTON**

Olivier Awards General Manager,  
SOLT & UK Theatre



© Craig Sugden



© Danny Kaan

## THE STUDIO

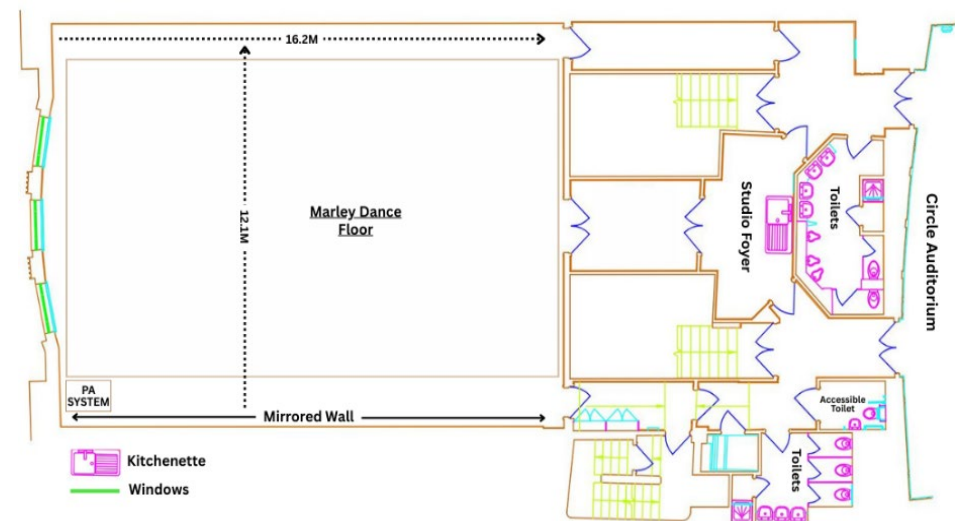
The Studio Space is a blank canvas and is ideal for auditions, rehearsals and workshops.

Equipped with a sprung floor, floor to ceiling mirror, integrated PA System and an upright Clavinova.

The Studio dimensions are the same as the Dominion Theatre Stage.

The Studio includes an extra area outside of the rehearsal space, with a kitchenette and toilet facilities attached.

<b>FLOOR LEVEL</b>	2
<b>CAPACITY</b>	50
<b>ROOM DIMENSIONS</b>	16.2m (L) x 12.1m (W)
<b>ACCESSIBILITY</b>	Access via Lift
<b>FACILITIES</b>	Air Conditioning
	Wi-Fi
	Access to tables and chairs
	Private kitchenette, including watercooler, kettle, fridge and microwave
	Private same level toilet facilities
<b>TECHNICAL</b>	Integrated PA System
	Upright Piano
	Marley Dance Floor
	Full length mirrored wall
	Ability to achieve a blackout
<b>ROOM RATE</b>	£2,950 + VAT per week



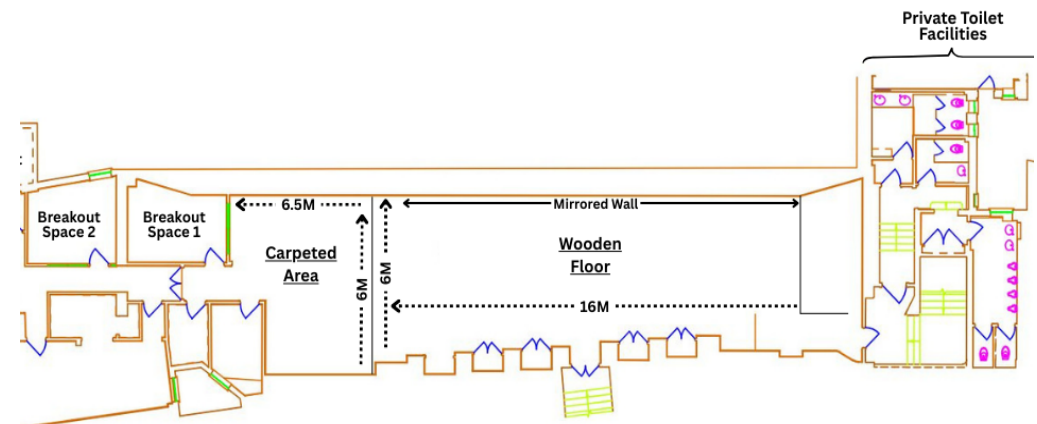
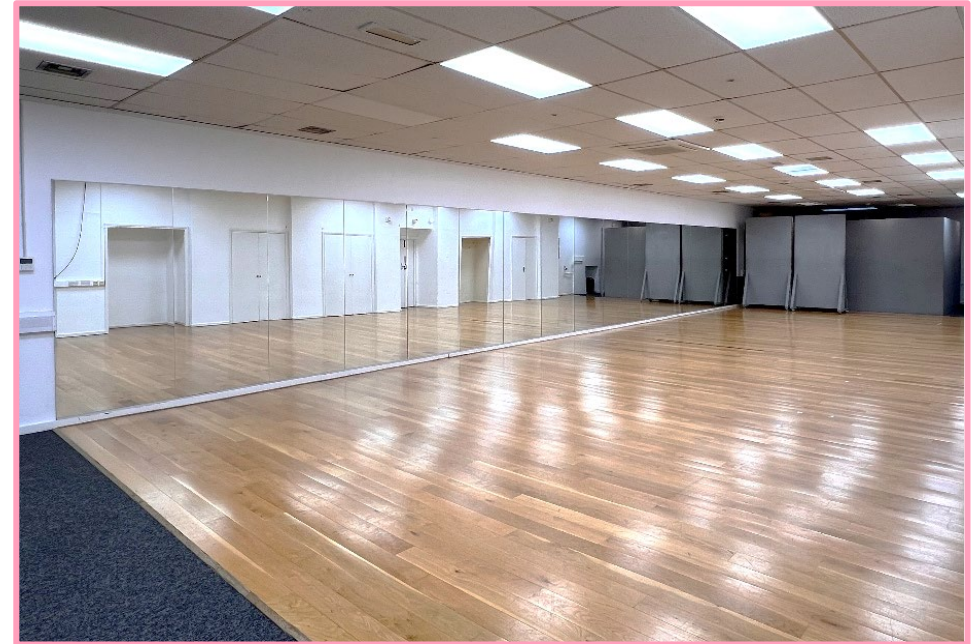
## THE GALLERY

The Gallery is a versatile space, ideal for rehearsals and workshops.

It has its own production office and breakout room included, ideal for stage/company management offices.

Complete with a mirrored wall, air conditioning and private toilet facilities.

<b>FLOOR LEVEL</b>	4
<b>CAPACITY</b>	40
<b>ROOM DIMENSIONS</b>	16.7m (L) x 6.4m (W)
<b>ACCESSIBILITY</b>	Access via Lift
<b>FACILITIES</b>	Air Conditioning
	Wi-Fi
	Access to tables and chairs
	Private toilet facilities
	Two breakout spaces
<b>TECHNICAL</b>	Wooden Dance Floor
	Full length Mirrored Wall
<b>ROOM RATE</b>	£1,700 + VAT per week



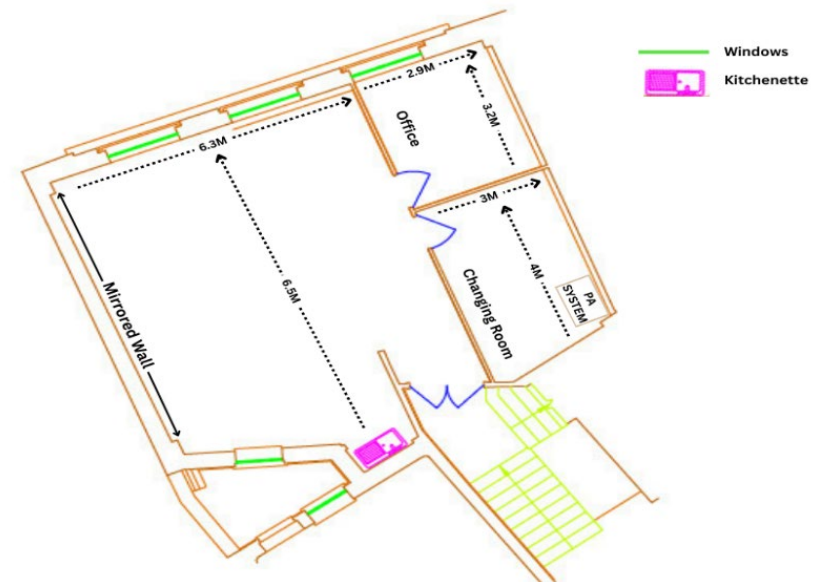
## THE FIRST FLOOR SUITE

The First Floor Suite is a versatile production and rehearsal space.

With two smaller rooms attached that are ideal for stage/company management offices and changing areas.

Complete with mirrors, integrated PA, kitchenette, and boasting plenty of natural light.

<b>FLOOR LEVEL</b>	1
<b>CAPACITY</b>	25
<b>ROOM DIMENSIONS</b>	6.5m (L) x 6.3m (W)
<b>FACILITIES</b>	Air Conditioning
	Wi-Fi
	Access to tables and chairs
	Private kitchenette, including kettle, fridge and microwave
	Two breakout spaces
<b>TECHNICAL</b>	Integrated PA System
	Full length mirrored wall
<b>ROOM RATE</b>	£400 + VAT per day
	£1650 + VAT per week



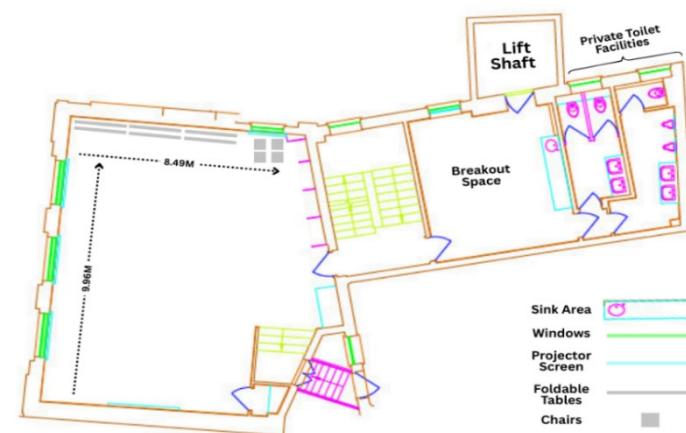
## THE BOARDROOM

The Boardroom is our premium meeting space.

It is ideal for meetings, training courses, read throughs as well as a costume department.

It includes its own breakout space with private toilet facilities.

<b>FLOOR LEVEL</b>	3
<b>CAPACITY</b>	25
<b>ROOM DIMENSIONS</b>	9.96m (L) x 8.49m (W)
<b>ACCESSIBILITY</b>	Access via Lift
<b>FACILITIES</b>	Air Conditioning
	Wi-Fi
	Access to tables and chairs
	Private Breakout Space with sink attached
	Private same level toilet facilities
<b>TECHNICAL</b>	Projector and Screen
<b>ROOM RATE</b>	£425 + VAT per day
	£2,250 + VAT per week



We were in the Boardroom, which we found to be spacious, well equipped, and perfectly suited to our needs and the IT set up allowed us to present without a hitch. Your team's professionalism and dedication to customer satisfaction were evident from my first enquiry to completion of the event itself.

**LORNA MEDCALF**

DAS Fire

## FREQUENTLY ASKED QUESTIONS

### Is there parking on site?

As we are in Central London, unfortunately there is no on-site parking. Speak to a member of the Events Team and they will be able to direct you on how best to unload any set etc.

### What time can we access the building?

Our standard hire days and times are Monday – Saturday, 10am – 6pm with access from 9:30am for management. Access to the spaces outside of these times will incur an additional charge.

### Do you have extra equipment that I can hire?

We hold a stock of various technical equipment to hire, including a Keyboard, TV Screen etc. If there is something specific that you require as part of your hire, please let the events team know and we will endeavour to facilitate.

### Can we access the space before our hire?

We cannot promise access to the spaces prior to the start of your hire. If you need to store anything before your hire, then please reach out and we will endeavour to assist wherever we can.

### Do you provide any catering options?

We have some catering options available, including Tea and Coffee packages. For details and pricing please contact a member of the Events Team.

### Can heels/tap shoes be used in the spaces?

Heels/tap shoes are only allowed in the Studio.

### Are your spaces accessible?

There are 17 steps to get from street level to our lift. The lift allows access to our Studio, Boardroom and Gallery spaces. There are 27 steps from street level to our First Floor Suite, with no lift access.



We LOVE using the spaces at the Dominion. Not only are all the spaces incredibly well equipped and in a super central location, the staff couldn't be more helpful. It's always top of our list.

### **NATALIE GALLACHER**

Casting Director, Pippa Ailion and Natalie Gallacher Casting

## MEET THE TEAM

### **HEAD OF EVENTS & CONCERT PROGRAMMING**

Claire Kenning ♦ [claire.kenning@nederland.co.uk](mailto:claire.kenning@nederland.co.uk)

### **EVENTS MANAGER**

Oliver Dowling ♦ [oliver.dowling@nederland.co.uk](mailto:oliver.dowling@nederland.co.uk)

### **HIRES & EVENTS ASSISTANT**

Laura White ♦ [laura.white@nederland.co.uk](mailto:laura.white@nederland.co.uk)